



HOOKS





HOOKS TABLE OF CONTENTS

Alloy Clevis Grab	1
Alloy Clevis Slip	2
Alloy Clevis Slip with Latch Kit	3
Barrel	4
Carbon Clevis Grab	5
Carbon Clevis Slip	6
Eye Grab	7
Eye Hooks Alloy	9
Eye Hooks Alloy Swivel	10
Eye Hooks Carbon	11
Eye Hooks Carbon Swivel	12
Eye Slip	8
Latch Kits	13
Sorting	14
Weld On	15

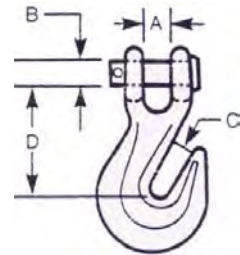


'Black Pin'-Alloy Clevis Grab Hooks

For use with Grade 70 or lower grade chains only
Gold chromated body with 'black pin'



Size	WLL (lbs)	Dimension Inches				Weight (lbs pc)	Product Code
		A	B	C	D		
1/4"	3,150	0.36	0.38	0.39	1.97	0.46	39310016
5/16"	4,700	0.38	0.44	0.43	2.28	0.75	39310020
3/8"	6,600	0.47	0.47	0.50	2.61	1.10	39310024
7/16"	8,800	0.67	0.55	0.58	2.79	1.53	39310028
1/2"	11,300	0.76	0.62	0.67	3.13	2.34	39310032



NOTE : Forged Alloy Steel, heat treated
Design Factor 4 : 1

WARNING : NEVER EXCEED WORKING LOAD LIMITS !
DO NOT USE GRADE 40 OR 70 FOR OVERHEAD LIFTING APPLICATIONS !
Inspect hooks and latches frequently-Measure opening (C) and compare with dimensions shown
Increased opening indicates overloading !
Disgard hooks which show signs of deformation or excessive wear !

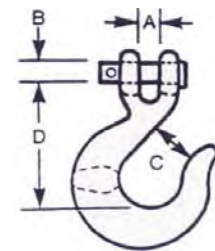


'Black Pin'-Alloy Clevis Slip Hooks

For use with Grade 70 or lower grade chains only
Gold chromated body with 'black pin'



Size	WLL (lbs)	Dimension Inches				Weight (lbs pc)	Product Code
		A	B	C	D		
1/4"	2,750	0.43	0.38	0.98	2.52	0.65	39031016
5/16"	4,300	0.51	0.43	1.10	2.82	0.92	39031020
3/8"	5,250	0.58	0.47	1.33	3.22	1.32	39031024
7/16"	7,000	0.67	0.54	1.61	3.69	2.07	39031028
1/2"	9,000	0.76	0.62	1.74	3.99	2.90	39031032



NOTE : Forged Alloy Steel, heat treated
Design Factor 4 : 1

WARNING : NEVER EXCEED WORKING LOAD LIMITS !
DO NOT USE GRADE 40 OR 70 FOR OVERHEAD LIFTING APPLICATIONS !
Inspect hooks and latches frequently-Measure opening (C) and compare with dimensions shown
Increased opening indicates overloading !
Disgard hooks which show signs of deformation or excessive wear !

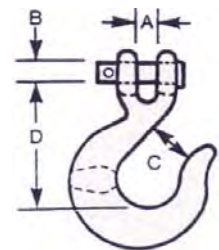


'Black Pin'-Alloy Clevis Slip Hooks with Latch

For use with Grade 70 or lower grade chains only
 Gold chromated body with 'black pin'



Size	WLL (lbs)	Dimension Inches				Weight (lbs pc)	Product Code
		A	B	C	D		
1/4"	2,750	0.43	0.38	0.98	2.52	0.65	390310161
5/16"	4,300	0.51	0.43	1.10	2.82	0.92	390310201
3/8"	5,250	0.58	0.47	1.33	3.22	1.32	390310241
7/16"	7,000	0.67	0.54	1.61	3.69	2.07	390310281
1/2"	9,000	0.76	0.62	1.74	3.99	2.90	390310321



NOTE : Forged Alloy Steel, heat treated
 Design Factor 4 : 1

STAINLESS STEEL - LATCH KITS

1/4"						0.02	29190010
5/16"						0.02	29190011
3/8"						0.03	29190022
7/16"						0.03	29190030
1/2"						0.06	29190030



WARNING : NEVER EXCEED WORKING LOAD LIMITS !
 DO NOT USE GRADE 40 OR 70 FOR OVERHEAD LIFTING APPLICATIONS !
 Inspect hooks and latches frequently-Measure opening (C) and compare with dimensions shown
 Increased opening indicates overloading !
 Disgard hooks which show signs of deformation or excessive wear !

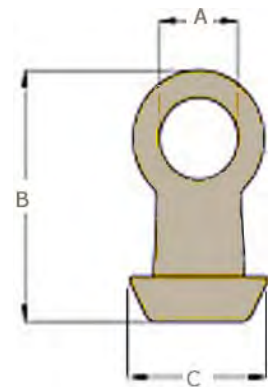


Barrel Hooks

Forged Carbon Steel, quenched and tempered
Meets the performance requirements of Federal Specifications RR-C-271D, Type V, Class 6,
Except for those provisions required by the contractor



Size Tons	WLL Tons		Dimension Inches			Weight (lbs pc)	Product Code
	Tip	Bottom	A	B	C		
1	2	7.5	1-1/2	4-1/2	2-3/8	6.25	37030050



NOTE : Forged Carbon Steel, heat treated
Design Factor 4 : 1

WARNING : NEVER EXCEED WORKING LOAD LIMITS !
Use only Alloy Chain and attachment for overhead lifting

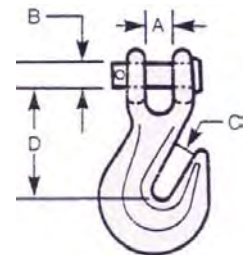


'Golden Pin'-Carbon Clevis Grab Hooks

For use with Grade 40 or lower chains only
 Self coloured body with 'golden pin'



Size	WLL (lbs)	Dimension Inches				Weight (lbs pc)	Product Code
		A	B	C	D		
1/4"	2,600	0.35	0.38	0.39	1.97	0.45	39300016
5/16"	3,900	0.41	0.43	0.44	2.27	0.74	39300020
3/8"	5,400	0.47	0.47	0.51	2.63	1.14	39300024
7/16"	7,200	0.67	0.55	0.58	2.79	1.45	39300028
1/2"	9,200	0.73	0.62	0.69	3.13	2.30	39300032



NOTE : Forged Carbon Steel, heat treated
 Design Factor 4 : 1

WARNING : NEVER EXCEED WORKING LOAD LIMITS !
 DO NOT USE GRADE 40 OR 70 FOR OVERHEAD LIFTING APPLICATIONS !
 Inspect hooks and latches frequently-Measure opening (C) and compare with dimensions shown
 Increased opening indicates overloading !
 Disgard hooks which show signs of deformation or excessive wear !

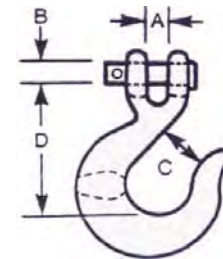


'Golden Pin'-Carbon Clevis Slip Hooks

For use with Grade 40 or lower chains only
Self coloured body with 'golden pin'



Size	WLL (lbs)	Dimension Inches				Weight (lbs pc)	Product Code
		A	B	C	D		
1/4"	1,950	0.43	0.37	0.98	2.61	0.65	39030016
5/16"	2,875	0.50	0.43	1.08	2.81	0.91	39030020
3/8"	4,000	0.58	0.48	1.37	3.24	1.30	39030024
7/16"	5,000	0.67	0.55	1.59	3.70	2.18	39030028
1/2"	6,500	0.75	0.64	1.73	3.95	3.00	39030032



NOTE : Forged Carbon Steel, heat treated
Design Factor 4 : 1

WARNING : NEVER EXCEED WORKING LOAD LIMITS !
DO NOT USE GRADE 40 OR 70 FOR OVERHEAD LIFTING APPLICATIONS !
Inspect hooks and latches frequently-Measure opening (C) and compare with dimensions shown
Increased opening indicates overloading !
Discard hooks which show signs of deformation or excessive wear !

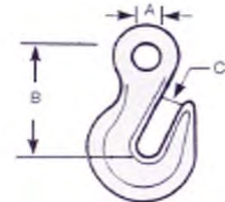


Eye Grab Hooks

For use with Grade 40 or lower chains only



Size	WLL (lbs)	Dimension Inches			Weight (lbs pc)	Product Code
		A	B	C		
1/4"	2,600	0.53	1.92	0.34	0.30	39335016
5/16"	3,900	0.61	2.29	0.43	0.51	39335020
3/8"	5,400	0.80	2.65	0.49	0.88	39335024
1/2"	9,200	0.89	3.21	0.65	1.79	39335032



NOTE : Forged Carbon Steel, heat treated
Design Factor 4 : 1

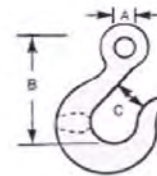
WARNING : NEVER EXCEED WORKING LOAD LIMITS !
DO NOT USE GRADE 40 OR 70 FOR OVERHEAD LIFTING APPLICATIONS !
Inspect hooks and latches frequently-Measure opening (C) and compare with dimensions shown
Increased opening indicates overloading !
Disgard hooks which show signs of deformation or excessive wear !

Eye Slip Hooks

For use with Grade 40 or lower chains only



Size	WLL (lbs)	Dimension Inches			Weight (lbs pc)	Product Code
		A	B	C		
1/4"	1,950	0.50	2.54	0.94	0.49	39085016
5/16"	2,875	0.62	2.92	1.07	0.62	39085020
3/8"	4,000	0.73	3.34	1.33	0.98	39085024
1/2"	6,500	0.94	4.04	1.66	2.52	39085032



NOTE : Forged Carbon Steel, heat treated
Design Factor 4 : 1

WARNING : NEVER EXCEED WORKING LOAD LIMITS !
DO NOT USE GRADE 40 OR 70 FOR OVERHEAD LIFTING APPLICATIONS !
Inspect hooks and latches frequently-Measure opening (C) and compare with dimensions shown
Increased opening indicates overloading !
Disgard hooks which show signs of deformation or excessive wear !

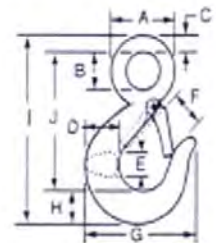


Alloy Steel Hoist Hooks

Alloy Steel, quenched and tempered
 Embossed Working Load Limit (WLL) with 5 : 1 safety factor
 Colour coding prevents mix-ups. Alloy Steel-Black Eye, Gold body.



WLL (Tons)	Dimension Inches										Weight (lbs)	Product Code
	A	B	C	D	E	F	G	H	I	J		
1	1.50	0.75	0.38	0.88	0.63	0.94	2.88	0.75	4.38	3.25	0.50	29101010
1-1/2	1.75	0.88	0.44	1.00	0.69	1.06	3.13	0.81	4.88	3.63	0.80	29101015
2	2.00	1.13	0.50	1.19	0.81	1.12	3.50	1.00	5.50	4.13	1.10	29101020
3	2.38	1.25	0.59	1.38	0.94	1.22	3.94	1.19	6.31	4.56	1.70	29101030
4-1/2	3.00	1.56	0.69	1.63	1.19	1.50	5.00	1.50	7.94	5.75	3.60	29101045
7	3.81	2.00	0.88	2.06	1.50	1.88	6.25	1.75	10.00	7.38	7.00	29101070
11	4.70	2.43	1.19	2.53	1.68	2.23	7.25	2.37	12.25	9.00	13.27	29101110



NOTE : Alloy Steel, heat treated
 Recommended maximum proof load 2 x WLL

WARNING : NEVER EXCEED WORKING LOAD LIMITS !
 Inspect hooks and latches frequently-Measure opening (F) and compare with dimensions shown
 Increased opening indicates overloading !
 Discard hooks which show signs of deformation or excessive wear !
 Latches are not designed to support loads-replace bent latches
 Always use thimbles to install hooks onto a rope

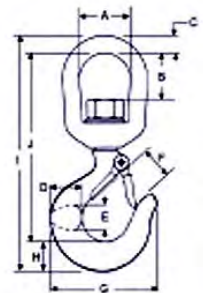


Alloy Steel Swivel Hooks

Forged Alloy Steel, quenched and tempered
 Embossed Working Load Limit (WLL) with 4.5 : 1 safety factor
 Colour coding prevents mix-ups. Alloy Steel-Black Eye Swivel, Gold body.



WLL (Tons)	Dimension Inches										Weight (lbs)	Product Code
	A	B	C	D	E	F	G	H	I	J		
1	1.23	0.92	0.40	0.83	0.60	0.98	2.95	0.86	5.50	4.35	0.81	29281010
1-1/2	1.50	1.35	0.52	0.94	0.66	1.07	3.33	0.86	6.50	5.23	1.41	29281015
2	1.73	1.70	0.64	1.13	0.75	1.10	3.75	1.04	7.50	6.00	2.24	29281020
3	1.70	1.60	0.64	1.36	0.87	1.21	4.25	1.20	8.00	6.25	2.74	29281030
4-1/2	1.95	1.84	0.78	1.66	1.11	1.52	5.00	1.55	9.50	7.50	4.71	29281045
7	2.42	2.42	1.02	2.10	1.35	2.04	7.00	1.99	11.75	9.75	10.30	29281070
11	2.70	2.51	1.10	2.65	1.75	2.40	8.00	2.45	14.50	11.12	16.15	29281110
15	4.10	3.76	1.50	3.50	2.69	3.41	10.34	3.00	21.34	16.71	46.50	29281150
22	4.10	3.76	1.50	4.63	3.00	4.00	13.62	3.61	23.25	18.01	70.00	29281220



NOTE : Alloy Steel, heat treated
 Recommended maximum proof load 2 x WLL

WARNING : NEVER EXCEED WORKING LOAD LIMITS !
 Inspect hooks and latches frequently-Measure opening (F) and compare with dimensions shown
 Increased opening indicates overloading !
 Discard hooks which show signs of deformation or excessive wear !
 Latches are not designed to support loads-replace bent latches
 Always use thimbles to install hooks onto a rope

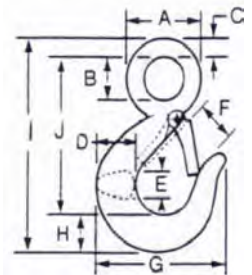


Carbon Steel Hoist Hooks

Forged Carbon Steel, quenched and tempered
 Embossed Working Load Limit (WLL) with 5 : 1 safety factor
 Colour coding prevents mix-ups. Carbon Steel-Black Eye, Red body.



WLL (Tons)	Dimension Inches										Weight (lbs)	Product Code
	A	B	C	D	E	F	G	H	I	J		
1/2	0.56	0.62	0.35	0.75	0.53	0.76	2.55	0.75	3.83	2.75	0.38	29100005
3/4	1.50	0.75	0.38	0.88	0.63	0.94	2.88	0.75	4.38	3.25	0.50	29100007
1	1.75	0.88	0.44	1.00	0.69	1.06	3.13	0.81	4.88	3.63	0.80	29100010
1-1/2	2.00	1.13	0.50	1.19	0.81	1.12	3.50	1.00	5.50	4.13	1.10	29100015
2	2.38	1.25	0.59	1.38	0.94	1.22	3.94	1.19	6.31	4.56	1.70	29100020
3	3.00	1.56	0.69	1.63	1.19	1.50	5.00	1.50	7.94	5.75	3.60	29100030
5	3.81	2.00	0.88	2.06	1.50	1.88	6.25	1.75	10.00	7.38	7.00	29100050
7-1/2	4.70	2.43	1.19	2.53	1.68	2.23	7.25	2.37	12.25	9.00	13.27	29100075



NOTE : Carbon Steel, heat treated
 Recommended maximum proof load 2 x WLL

WARNING : NEVER EXCEED WORKING LOAD LIMITS !
 Inspect hooks and latches frequently-Measure opening (F) and compare with dimensions shown
 Increased opening indicates overloading !
 Discard hooks which show signs of deformation or excessive wear !
 Latches are not designed to support loads-replace bent latches
 Always use thimbles to install hooks onto a rope

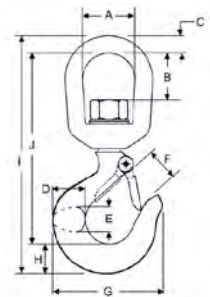


Carbon Steel Swivel Hooks

Forged Carbon Steel, quenched and tempered
 Embossed Working Load Limit (WLL) with 5 : 1 safety factor
 Colour coding prevents mix-ups. Carbon Steel-Black Eye Swivel, Red body.



WLL (Tons)	Dimension Inches										Weight (lbs)	Product Code
	A	B	C	D	E	F	G	H	I	J		
3/4	1.23	0.92	0.40	0.83	0.60	0.98	2.95	0.86	5.50	4.35	0.81	29280010
1	1.50	1.35	0.52	0.94	0.66	1.07	3.33	0.86	6.50	5.23	1.41	29280011
1-1/2	1.73	1.70	0.64	1.13	0.75	1.10	3.75	1.04	7.50	6.00	2.24	29280015
2	1.70	1.60	0.64	1.36	0.87	1.21	4.25	1.20	8.00	6.25	2.74	29280020
3	1.95	1.84	0.78	1.66	1.11	1.52	5.00	1.55	9.50	7.50	4.71	29280030
5	2.42	2.42	1.02	2.10	1.35	2.04	7.00	1.99	11.75	9.50	10.30	29280050
7-1/2	2.70	2.51	1.10	2.65	1.75	2.40	8.00	2.45	14.50	11.12	16.15	29280075



NOTE : Carbon Steel, heat treated
 Recommended maximum proof load 2 x WLL

WARNING : NEVER EXCEED WORKING LOAD LIMITS !
 Inspect hooks and latches frequently-Measure opening (F) and compare with dimensions shown
 Increased opening indicates overloading !
 Discard hooks which show signs of deformation or excessive wear !
 Latches are not designed to support loads-replace bent latches
 Always use thimbles to install hooks onto a rope

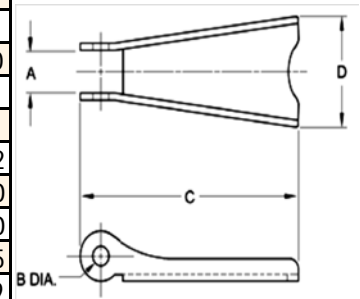


Stainless Steel Latch Kits

For Hoist Hooks



WLL Tons		Dimensions inches				Weight (lbs pc)	Product Code
Carbon	Alloy	A	B	C	D		
3/4	1	0.44	0.16	1.44	0.59	0.02	29190010
1	1-1/2	0.44	0.16	1.70	0.59	0.02	29190011
1-1/2	2	0.45	0.17	1.84	0.77	0.03	29190021
2	3	0.47	0.17	2.00	0.82	0.03	29190022
3	4-1/2	0.56	0.19	2.41	1.00	0.06	29190030
5	7	0.58	0.20	2.97	1.21	0.11	29190050
7-1/2	11	0.59	0.27	3.66	1.50	0.17	29190075
10	15	0.66	0.27	3.69	1.52	0.25	29191509
15	22	0.78	0.27	3.86	1.59	0.75	29192209



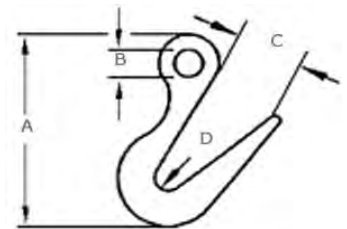
WARNING : NEVER EXCEED WORKING LOAD LIMITS !
Latches are not designed to support loads - replace bent latches.

Sorting Hooks

Forged Alloy Steel, quenched and tempered
 Deep straight throat permits efficient handling of flat plates or large cylindrical shapes.



Size Tons	WLL Tons		Dimension Inches				Weight (lbs pc)	Product Code
	Tip	Bottom	A	B	C	D		
7	2	7.5	9-11/16	1-3/8	2-13/16	5/8	6.25	29109120



NOTE : Forged Alloy Steel, heat treated
 Design Factor 5 : 1

WARNING : NEVER EXCEED WORKING LOAD LIMITS !
 Use only Alloy Chain and attachment for overhead lifting

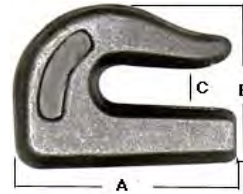


Weld on Hooks

Weld-On Grab Hook is a heavy-duty half grab hook that can be welded anywhere. Manufactured from high test steel, this half grab hook was designed to be welded anywhere you need a convenient chain attachment point. Originally used for automobile securement, this hook has become one of the most universally useful attachment points on the market.



Size	WLL (lbs)	Dimensions Inches			Weight (lbs pc)	Product Code
		A	B	C		
5/16"	3,900	2-1/2	2	3/8	0.42	39307020
3/8"	5,400	3	2-1/4	1/2	0.84	39307024
1/2"	9,200	4	3	5/8	1.90	39307032



WARNING : NEVER EXCEED WORKING LOAD LIMITS !
 Inspect hooks frequently-Measure opening (C) and compare with dimensions shown
 Increased opening indicates overloading !
 Discard hooks which show signs of deformation or excessive wear !