



CABLE ACCESSORIES

CABLE ACCESSORIES



CABLE ACCESSORIES



www.vanguardsteelvancouver.com

www.vanguardsteel.com

VANGUARD STEEL LTD.



CABLE ACCESSORIES TABLE OF CONTENTS

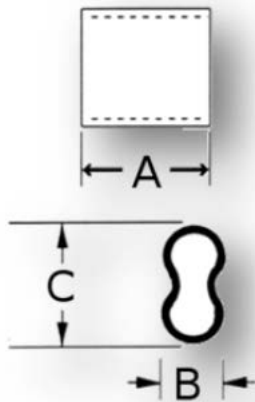
| | Page |
|--------------------------------------|------|
| Aluminum oval sleeves | 1 |
| Aluminum stop sleeves | 2 |
| Copper oval sleeves | 3 |
| Copper oval zinc plated oval sleeves | 4 |
| Copper stop sleeve | 5 |
| Stainless Steel oval sleeves | 6 |
| Stainless Steel thimbles | 7 |

Aluminum Hourglass Oval Sleeves

Aluminum Swage sleeves are an economical fasteners for loops or lap splices. An Ideal fastener for Galvanized Steel Cable.

Not recommended for stainless cable due to electrolysis.

Hourglass shaped sleeves allow for the smoothest swage (crimp).



| Aluminum Oval | | | | Weight (lbs/100) | Product Code |
|---------------|----------------------|-------|-------|------------------|--------------|
| Cable Size | Dimensions in inches | | | | |
| | A | B | C | | |
| 3/64" | 0.375 | 0.133 | 0.198 | 0.06 | 29500003P |
| 1/16" | 0.375 | 0.172 | 0.250 | 0.08 | 29500004P |
| 3/32" | 0.500 | 0.281 | 0.406 | 0.25 | 29500006P |
| 1/8" | 0.625 | 0.344 | 0.500 | 0.58 | 29500008P |
| 5/32" | 0.688 | 0.375 | 0.562 | 0.70 | 29500010P |
| 3/16" | 0.688 | 0.375 | 0.562 | 1.45 | 29500012P |
| 1/4" | 1.125 | 0.536 | 0.812 | 2.80 | 29500016P |
| 5/16" | 1.250 | 0.687 | 1.032 | 4.10 | 29500020P |
| 3/8" | 1.438 | 0.750 | 1.156 | 5.70 | 29500024P |
| 1/2" | 2.000 | 1.060 | 1.625 | 17.20 | 29500032P |



WARNING : Properly swaged, oval sleeves are capable of maintaining over 90% of the breaking strength of the cable. To determine the exact holding strength, a pull test must be performed prior to use.

Safety margins MUST be maintained in line with the respective applications.

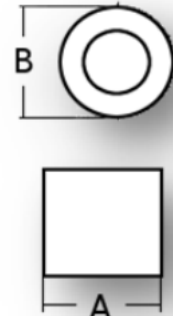
Aluminum Stop (button) Sleeves

Aluminum stop sleeves are designed to terminate cable to prevent dangerous fraying preferred for use with galvanized cable.

Prevents cable from pulling through a guide.



| Aluminum Stop | | | Weight (lbs/100) | Product Code |
|---------------|----------------------|-------|---------------------|-----------------|
| Cable Size | Dimensions in inches | | | |
| | A | B | | |
| 1/16" | 0.156 | 0.250 | 0.04 | 29510004P |
| 3/32" | 0.313 | 0.344 | 0.25 | 29510006P |
| 1/8" | 0.313 | 0.344 | 0.23 | 29510008P |
| 5/32" | 0.344 | 0.438 | 0.40 | 29510010P |
| 3/16" | 0.344 | 0.438 | 0.35 | 29510012P |
| 1/4" | 0.688 | 0.688 | 2.10 | 29510016P |



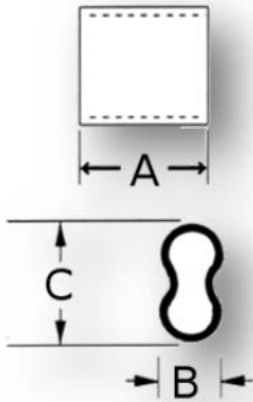
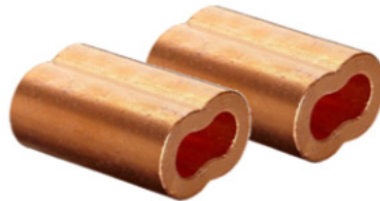
WARNING : The maximum holding strength of stop sleeves is approximately 1/3 of the strength of the cable. To determine the exact holding strength, a pull test must be performed prior to use. Not designed for load carrying purposes. Not to be used in overhead lifting or hoisting applications.

Safety margins MUST be maintained in line with the respective applications.

Copper Oval Sleeves

Copper Swage sleeves are an economical fastener for loops or lap splices. An ideal fastener for Stainless Steel Cable.

Meets MS-51844



| Copper Oval | | | | Weight (lbs/100) | Product Code |
|-------------|----------------------|-------|------|---------------------|-----------------|
| Cable Size | Dimensions in inches | | | | |
| | A | B | C | | |
| 3/64" | 0.375 | 0.134 | 0.20 | 0.17 | 29520003 |
| 1/16" | 0.375 | 0.170 | 0.25 | 0.26 | 29520004 |
| 3/32" | 0.425 | 0.224 | 0.37 | 0.53 | 29520006 |
| 1/8" | 0.550 | 0.324 | 0.39 | 1.57 | 29520008 |
| 5/32" | 0.625 | 0.365 | 0.59 | 2.24 | 29520010 |
| 3/16" | 1.000 | 0.449 | 0.67 | 5.00 | 29520012 |
| 1/4" | 1.138 | 0.515 | 0.81 | 7.60 | 29520016 |
| 5/16" | 1.125 | 0.665 | 1.01 | 11.50 | 29520020 |
| 3/8" | 1.250 | 0.727 | 1.11 | 15.00 | 29520024 |
| 7/16" | 1.750 | 0.850 | 1.30 | 28.00 | 29520028 |
| 1/2" | 1.900 | 0.965 | 1.48 | 38.00 | 29520032 |



WARNING : Properly swaged, oval sleeves are capable of maintaining over 90% of the breaking strength of the cable. To determine the exact holding strength, a pull test must be performed prior to use.

Safety margins MUST be maintained in line with the respective applications.

Copper Oval Zinc Plated Sleeves

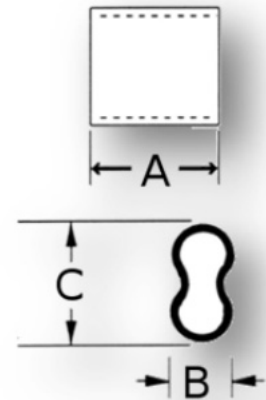
Copper Swage sleeves are an economical fasteners for loops or lap splices. An Ideal fastener for Stainless Steel Cable.

Zinc plating of sleeves provides corrosion protection and an attractive finish.

Meets MS-51844



| Copper Oval Z.P. | | | | Weight (lbs/100) | Product Code |
|------------------|----------------------|-------|------|---------------------|-----------------|
| Cable Size | Dimensions in inches | | | | |
| | A | B | C | | |
| 3/64" | 0.375 | 0.134 | 0.20 | 0.17 | 29540003 |
| 1/16" | 0.375 | 0.170 | 0.25 | 0.26 | 29540004 |
| 3/32" | 0.425 | 0.224 | 0.37 | 0.53 | 29540006 |
| 1/8" | 0.550 | 0.324 | 0.39 | 1.57 | 29540008 |
| 5/32" | 0.625 | 0.365 | 0.59 | 2.24 | 29540010 |
| 3/16" | 1.000 | 0.449 | 0.67 | 5.00 | 29540012 |
| 1/4" | 1.138 | 0.515 | 0.81 | 7.60 | 29540016 |
| 5/16" | 1.125 | 0.665 | 1.01 | 11.50 | 29540020 |
| 3/8" | 1.250 | 0.727 | 1.11 | 15.00 | 29540024 |
| 7/16" | 1.750 | 0.850 | 1.30 | 28.00 | 29540028 |
| 1/2" | 1.900 | 0.965 | 1.48 | 38.00 | 29540032 |

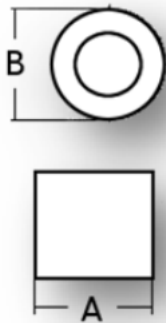


WARNING : Properly swaged, oval sleeves are capable of maintaining over 90% of the breaking strength of the cable. To determine the exact holding strength, a pull test must be performed prior to use.

Safety margins MUST be maintained in line with the respective applications.

Copper Stop (button) Sleeves

Copper stop sleeves are designs to terminate cable to prevent dangerous fraying preferred for use with stainless steel cable
Stops prevent cable from pulling through a guide.



| Copper Stop | Dimensions in inches | | Weight (lbs/100) | Product Code |
|-------------|----------------------|-------|------------------|--------------|
| Cable Size | A | B | | |
| 3/64" | 0.225 | 0.170 | 0.14 | 29530003 |
| 1/16" | 0.218 | 0.203 | 0.19 | 29530004 |
| 3/32" | 0.328 | 0.328 | 0.79 | 29530006 |
| 1/8" | 0.328 | 0.328 | 0.70 | 29530008 |
| 5/32" | 0.329 | 0.422 | 1.18 | 29530010 |
| 3/16" | 0.328 | 0.422 | 1.06 | 29530012 |
| 1/4" | 0.703 | 0.656 | 6.20 | 29530016 |
| 5/16" | 0.703 | 0.656 | 5.25 | 29530020 |



WARNING : The maximum holding strength of stop sleeves is approximately 1/3 of the strength of the cable.
To determine the exact holding strength, a pull test must be performed prior to use.
Not designed for load carrying purposes.
Not to be used in overhead lifting or hoisting applications.

Safety margins MUST be maintained in line with the respective applications.

Stainless Steel Oval Sleeves

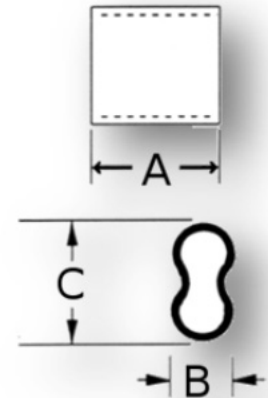
Stainless steel swaged sleeves can be used with galvanized or stainless steel wire. Made from T-304 rods, these swage sleeves withstand the most challenging conditions providing the maximum in corrosion resistance.

These sleeves require special stainless steel swaging tools.

Meets MS-51844



| Stainless Steel | | Oval | | Weight (lbs/100) | Product Code |
|-----------------|----------------------|-------|-------|---------------------|-----------------|
| Cable Size | Dimensions in inches | | | | |
| | A | B | C | | |
| 3/64" | 0.375 | 0.133 | 0.201 | 0.16 | 29550003 |
| 1/16" | 0.375 | 0.137 | 0.229 | 0.15 | 29550004 |
| 3/32" | 0.375 | 0.184 | 0.298 | 0.27 | 29550006 |
| 1/8" | 0.375 | 0.233 | 0.380 | 0.43 | 29550008 |
| 5/32" | 0.720 | 0.322 | 0.500 | 1.41 | 29550010 |
| 3/16" | 0.875 | 0.352 | 0.564 | 2.33 | 29550012 |
| 1/4" | 1.130 | 0.454 | 0.716 | 4.76 | 29550016 |

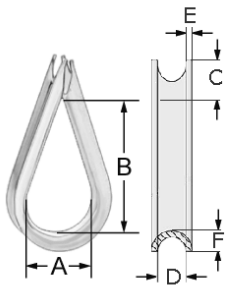


WARNING : Properly swaged, oval sleeves are capable of maintaining over 90% of the breaking strength of the cable. To determine the exact holding strength, a pull test must be performed prior to use.

Safety margins MUST be maintained in line with the respective applications.

Stainless AN Thimbles

For applications using small diameter galvanized or stainless cable.
Made from AISI 316 stainless rod.



| Size | Item No. | Dimension Inches | | | | | | Weight (lbs/100) | Product Code |
|-----------------|----------|------------------|-------|-------|-------|-------|-------|------------------|--------------|
| | | A | B | C | D | E | F | | |
| 3/64-1/16-5/64" | C-3 | 0.350 | 0.671 | 0.157 | 0.093 | 0.032 | 0.078 | 0.15 | 29600004 |
| 3/32-1/8-7/64" | C-4 | 0.350 | 0.671 | 0.218 | 0.140 | 0.032 | 0.078 | 0.43 | 29600006 |
| 5/32" | C-5 | 0.400 | 0.796 | 0.218 | 0.171 | 0.032 | 0.109 | 0.60 | 29600010 |
| 3/16" | C-6 | 0.500 | 1.000 | 0.312 | 0.203 | 0.032 | 0.171 | 0.98 | 29600012 |
| 1/4" | C-8 | 0.700 | 1.406 | 0.406 | 0.265 | 0.032 | 0.171 | 1.50 | 29600016 |
| 5/16" | C-10 | 0.900 | 1.796 | 0.437 | 0.328 | 0.040 | 0.218 | 3.50 | 29600020 |
| 3/8" | C-12 | 1.000 | 2.000 | 0.625 | 0.390 | 0.060 | 0.265 | 8.50 | 29600024 |

WARNING Wire rope thimbles do not have an established load rating and are meant to serve as rope protection only.



General Warnings

All Vanguard rigging products are sold with the express understanding that both the purchaser and the end user are thoroughly familiar with the safe, proper and acceptable applications of the products.

It is the responsibility of the end user to establish proper safety programs and to provide thorough training for all personnel prior to use. The training programs must meet any federal/provincial/state/local code requirements, existing plant/site safety rules and regulations, and all instructions provided in the applicable section of this catalogue.

Product failure can occur due to abuse, misapplication, lack of maintenance, use by unqualified personnel and improper inspection prior to use. **Any failure of rigging products may result in property damage, personal injury and even death!!!!**

Standards

There are numerous government and industrial standards that cover rigging products. This catalogue makes no attempt to reference all of them; it references to the standards that are most frequently asked about.

Working Load Limit (WLL) – Safe Working Load (SWL)

The Working Load Limits shown in this catalogue are applicable to products that are new or “in as new” condition. The Working Load Limits ratings refer to the maximum amount of force or load that the rigging product can carry under normal working/environmental conditions. The Working Load Limits and Design Factor can be affected by wear, misuse, overloading, shock loading, side loading, corrosion, deformation, product alteration and other use conditions. Inspection of rigging products prior to use is required to determine whether the product continues to meet the assigned WLL provided in this catalogue, should be used at a reduced rating or removed from service.

The WLL rating must never be exceeded!!!!



General information disclaimer

The contents contained in this publication are for general information only.

Although every effort has been made to assure the accuracy of the information at time of print, persons who use the Catalog should note that ratings, laws, rules, and policies change from time to time and that these changes may alter the information contained in this publication.

Vanguard Steel Ltd. assumes no liability for Catalog errors or omissions.

It is the responsibility of each person who uses this Catalog to ascertain current information that pertains to the individual lifting program, particularly with regard to satisfactory safety compliance requirements. Check your Provincial and Local safety standards before any operation or lift is attempted.

It is the responsibility of the person/operator to frequently search for updated reference information.

Do not use lesser than matching Grade components for any lifting application !

Do not use Slings, Chains or Accessories with signs of wear or deformation !

Inspections - Each day before being used, the sling and all fastenings and attachments shall be inspected for damage or defects by a competent person designated by the employer. Additional inspections shall be performed during sling use where service conditions warrant. Damaged or defective slings shall be immediately removed from service.

Five Locations to Serve You

Toronto
Head Office
2160 Meadowpine Blvd.
Mississauga, Ontario
L5N 6H6
Phone (905) 821-1100
Fax (905) 821-2024



Montreal
2205 de l'Aviation
Dorval, Quebec
H9P 2X6
Phone (514) 685-1515
Fax (514) 685-1516



Winnipeg
190 Omands Creek Blvd.
Winnipeg, Manitoba
R2R 1V7
Phone (204) 694-2259
Fax (204) 633-7230



Edmonton
7606 McIntyre Road, N.W.
Edmonton, Alberta
T6E 6Z1
Phone (780) 466-1115
Fax (780) 469-4545



Vancouver
7880 Fraser Park Drive
Burnaby, BC
V5J 5L8
Phone (604) 294-3191
Fax (604) 294-8845

