

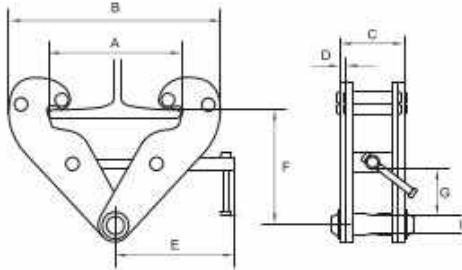


MATERIAL HANDLING TABLE OF CONTENTS

	Page
Beam Clamps	1
Cable pullers	2
Cargo Trolley	3
Red Beast Chain Hoist	4
Red Beast Chain Hoist Parts	5
Red Beast Lever Hoist	6
Red Beast Lever Hoist Parts	7
Gold Chain Hoist	8
Gold Chain Hoist Parts	9
Gold Lever Hoist	10
Gold Lever Hoist Parts	11
Type-1 Lever Hoist	12
Type-1 Lever Hoist Parts	13
Push Trolleys	14

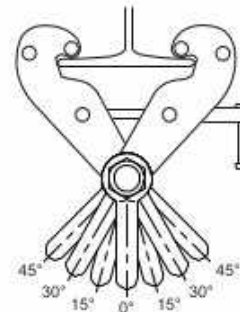
BEAM CLAMPS

- Meet ANSI B30.16 standards
- ISO 9001 – 2001 certified factory



Capacity Metric Tons	Test Load (kN)	Weight (lbs)	Flange Width (mm)	Dimensions (mm)								Vanguard Code
				A	B	C	D	E	F	G	H	
1	14.71	8.82	75-230	240	192-367	94	4	194	102-154	22	20	3856 0001
2	29.42	10.58	75-230	240	192-367	102	8	194	102-154	22	20	3856 0002
3	44.13	21.61	80-345	355	243-520	132	8	241	133-223	38	22	3856 0003
5	73.50	25.57	80-345	355	243-520	142	10	241	133-223	35	28	3856 0005
10	147.00	37.48	80-350	360	272-532	180	12	284	155-234	47	38	3856 0010

Angle From Vertical	0°	0° to 15°	15° to 30°	30° to 45°
Reduction Factor	NIL	17%	34%	50%
Models	WLL	WLL	WLL	WLL
3856 0001	1T	0.8T	0.6T	0.5T
3856 0002	2T	1.6T	1.3T	1T
3856 0003	3T	2.5T	2T	1.5T
3856 0005	5T	4.1T	3.3T	2T
3856 0010	10T	8.3T	6.6T	5T



Installation:

THE INSTALLATION of beam clamps must be performed by qualified riggers
 To attach clamps to a beam, open the jaws, slide the clamp over the flange and tighten the locking bar

Warning:

FAILURE TO OBSERVE these warnings may result in serious injury or death!

- These Beam Clamps are designed as an Anchor Point for straight vertical lifts only and **MUST NOT BE USED** in case of side pulls or where the angle of a vertical lift exceeds 3 degrees
- **NEVER EXCEED WORKING LOAD LIMITS**
- **NEVER LIFT LOADS OVER PEOPLE**
- **DO NOT USE these beam clamps:**
 - unless the beams have been tested and approved for attaching lifting devices
 - unless the size range of the clamp corresponds with the size of the beam flange
 - without making sure that they are fully tightened and properly engaged to support the load
 - without making sure that the beams' load rating exceeds the load rating of the beam clamp
 - without closely inspecting for signs of wear or damage prior to use
 - if the load swings during the lifting operation

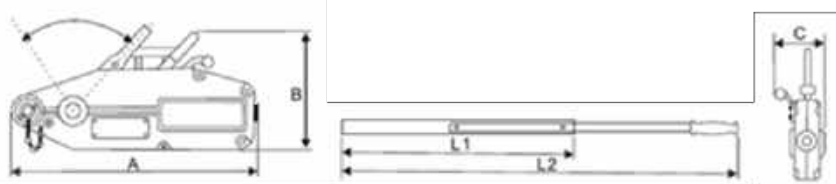
*without making sure that they are fully tightened and properly engaged to support

Cable Pullers

Multifunctional wire rope hoist system lifts and tows in different work areas. Heavy-duty design with aluminum-alloy housing and auto-adjusting device allows for required rope length (up to 65 feet).



Cable Puller	Model	VH-008	VH-016	VH-032
	Product Code	38600008	38600016	38600032
Lifting Capacity (kg)		800	1600	3200
Rated Pulling Capacity (kg)		1250	2500	5000
Rope Advance per Full Stroke (mm)		60	60	40
Lever pull at WLL (kg)		25	30	50
Rope Diameter (mm)		8.3 mm	11 mm	16 mm
Standard Rope Length (ft) Supplied Extra		66	66	66
Net Weight Without Cable (lb)		15	31	51



Dimensions (cm)					
Model	A	B	C	L 1	L 2
VH-008	426	235	84		80
VH-016	545	280	97	80	120
VH-032	660	325	116	80	120

Galvanized Wire Rope for Cable Puller C/W Alloy Hook & Latch Kit

Model	Size	Length	Weight-lbs	Product Code
VH-008-66-20	8.3 mm	66 ft	16	38600108
VH-016-66-28	11 mm	66 ft	30	38600116
VH-032-66-40	16 mm	66 ft	46	38600132



Supplied with Aluminum Body, Steel body available on request

The hoist has low maintenance requirements and ease of service. Overload protection endures high personal safety when in operation. Specially built in shear pins can be replaced without removing the load. All Hoists are supplied with an extendable operating lever.

Cargo Trolley

A safe and economical means of moving/transporting heavy products.
Available in 6, 8, 12 and 18 Metric Ton capacities.



Cargo Trolley		Capacity			
Model		6 Ton	8 Ton	12 Ton	18 Ton
Product Code		38579006	38579008	38579012	38579018
Length	mm	298	398	498	498
	Inches	11.74	15.67	19.61	19.61
Width	mm	222	222	222	312
	Inches	8.74	8.74	8.74	12.28
Height	mm	110	110.00	110	110
	Inches	4.33	4.33	4.33	4.33
Weight	kgs	15.5	22.5	29.5	43.50
	pounds	34.14	49.56	64.98	95.82

6 T and 12 T units are not standard stock items



Handles for VCT-B Swivel Style Cargo Trolleys

Model Handles for	Product Code
6, 8 & 12 Ton Trolleys	3857 9108
18 Ton Trolleys	3857 9118



Polyurethane Wheels

Fits all capacity of VCT-B cargo trolleys

- 6t unit requires 4 PU wheels
- 8t unit requires 6 PU wheels
- 12t unit requires 8 PU wheels
- 18t unit requires 10 PU wheels

Description	Product Code
PU Wheels	3857 9101

WARNING: NEVER EXCEED WORKING LOAD LIMITS!
INSPECT ALL COMPONENTS FREQUENTLY FOR SIGNS OF WEAR OR DAMAGE
CARGO TROLLEYS SHOULD ONLY BE USED/INSTALLED BY QUALIFIED PROPERLY TRAINED PERSONNEL.

Red Beast Chain Hoists

Red Beast Series Hoists, designed for the most demanding construction and mining application.

The Professional's Choice for Reliable Lifting Solutions



Chain Hoist							
Model #	Lift ft.	Rating Tons		Capacity (lbs)	Load Chain	Weight (lbs/pc)	Product Code
VCHA-050	10	1/2		1,000	6 x 18	18.52	385031005
VCHA-100	10	1		2,000	6 x 18	21.35	385031010
VCHP-150	10	1-1/2		3,000	8 x 24	37.50	385031015
VCHP-200	10	2		4,000	8 x 24	49.7	385031020
VCHP-300	10	3		6,000	10 x 30	70.50	385031030
VCHP-500	10	5		10,000	10 x 30	90.55	385031050

VCHP-050	20	1/2		1,000	6 x 18	24.25	385032005
VCHP-100	20	1		2,000	6 x 18	29.76	385032010
VCHP-150	20	1-1/2		3,000	8 x 24	44.09	385032015
VCHP-200	20	2		4,000	8 x 24	49.60	385032020
VCHP-300	20	3		6,000	10 x 30	71.65	385032030
VCHP-500	20	5		10,000	10 x 30	123.45	385032050



Parts for "RB" Series Chain Hoists

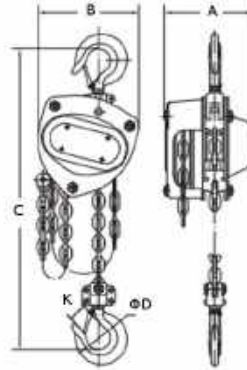
		1/2 Ton	1 Ton	1-1/2 Ton	2 Ton	3 Ton	5 Ton
Load Chain	Dimension (mm)	6 x 18	6 x 18	8 x 24	8 x 24	10 x 30	10 x 30
	Part Number	38580515	38580618	38580721	38580824	38581030	38581030
	Weight (lbs/ft)	0.37	0.37	0.71	0.71	1.46	1.46
Bottom Hook Assembly *							
Latch Kit							
Friction Discs (asbestos Free)							

* Top & Bottom Hook assemblies come C/W Cast Latch.

7-1/2, 10, 20 and 25 ton are also available as a special order from our factory.

WARNING: NEVER EXCEED WORKING LOAD LIMITS!

Red Beast Chain Hoists



Model		VCH-12	VCH-1	VCH-112	VCH-2	VCH-3	VCH-5
Capacity	Tons	0.50	1.00	1.50	2.00	3.00	5.00
Proof Load	kN	3.75	7.50	15.00	22.50	30.00	75
Effort (max. lift)	N	240	250	265	335	372	360
# of falls, load chain		1	1	1	1	1	2
Load Chain	mm	5 x 15	6 x 18	7 x 21	8 x 24	10 x 30	10 x 30
Dimensions	A						
(mm)	B						
	C						
	D						
	K						

Special Features

- Compact design
- Optional Gear Ratio
- Sealed Bearings
- Automatic brake engagement holding load at any desired height.
- Double pawl for increased safety and easier adjustment.
- Alloy load chain
- Articulating top hook
- Extra thick heavy duty gears.
- Rubber hand grip for greater operator and comfort.
- Forged top and bottom hooks c/w latches, that rotate 360 °.
- Hooks are designed to stretch when overloaded before chain failure.
- Proof tested at 1.5 times the WLL.**

WARNING: NEVER EXCEED WORKING LOAD LIMITS!



Red Beast Lever Hoists

Red Beast Series Hoists, designed for the most demanding construction and mining application.

The Professional's Choice for Reliable Lifting Solutions
ASME B30.21



Lever Hoist							
Model #	Lift ft.	Rating Tons	Capacity (lbs)	Load Chain	Weight (lbs/pc)	Product Code	
VLHK 08	5	.8	1,600	5.6 x 15.7	6.30	385530508	
VLHK 10	5	1.0	2,000	5.6 x 15.7	11.70	385530510	
VLHK-16	5	1.6	3,200	7.1 x 19.9	14.40	385530516	
VLHK-3.2	5	3.2	6,400	10 x 28	22.50	385530532	
VLHK 08	10	.8	1,600	5 x 15	8.00	385531008	
VLHK-10	10	1.0	2,000	5 x 15	13.50	385531010	
VLHK-16	10	1.6	3,200	6 x 18	17.00	385531016	
VLHK-3.2	10	3.2	6,400	7 x 21	26.00	385531032	



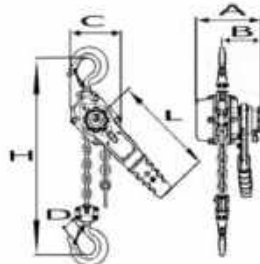
Parts for "RB" Series Lever Hoists

		VLHK 08	VLHK 10	VLHK 1.6	VLHK 3.2
Load Chain	Dimension (mm)	5.6 x 15.7	5.6 x 15.7	7.1 x 19.9	10 x 28
	Part Number	385830515	385830515	385830719	385831028
Bottom Hook Assembly	*	385536008	385536010	385536016	385536032
Top Hook Assembly	*	385535008	385535010	385535016	385535032
Latch Kit		385538008	385538010	385538016	385538032
Ratchet Disc W/Friction Disc		385537008	385537008	385537016	385537032
Handle					
Square Cast Ring		385593002E	385593002E	385593002E	385593015E

* Top and Bottom Hook Assemblies come complete with Cast Latches

WARNING: NEVER EXCEED WORKING LOAD LIMITS!

Red Beast Lever Hoists



0.8 - 3.2T



Model	VLHK				
Capacity	Tons	.8	1.0	1.6	3.2
Proof Load	kN	1.2	1.5	2.4	4.8
Effort (max. lift)	N	215	294	304	372
# of falls, load chain		1	1	1	1
Load Chain	mm	5.6 x 15.7	5.6 X 15.7	7.1 X 19.9	10 X 28
Dimensions (mm)	H	300	300	350	395
	A	150	150	168	201
	B	100	100	104	118
	C	119	119	126	159
	D	24	24	32	35
	L	245	245	265	415

Special Features

- Compact design
- Optimal Gear Ratio
- Sealed Bearings
- Automatic brake engagement holding load at any desired height
- Double pawl for increased safety and easier adjustment
- The Ratchet disc and Friction Plate/Discs are fused together. This design greatly increases the brake service life and reduces wear and tear while offering greater oil repellent.
- Extra thick heavy duty gears
- Rubber hand grip for greater operator and comfort
- Forged top and bottom hooks c/w latches, that rotate 360 °
- Hooks are designed to stretch when overloaded before chain failure
- Proof tested at 1.5 times the WLL**

Alloy load chain
Articulating top hook

WARNING: NEVER EXCEED WORKING LOAD LIMITS!



Gold Series Chain Hoists

Gold Series Hoists, designed for the most demanding construction and mining application. The Choice of hoist for "PROFESSIONALS" Proof tested at 1.5 times the WLL.



Chain Hoist							
Model #	Lift ft.	Rating Tons		Capacity (lbs)	Load Chain	Weight (lbs/pc)	Product Code
VCHP-12	10	1/2		1,000	5 x 15	14.45	38501005E
VCHP-1	10	1		2,000	6 x 18	21.35	38501010E
VCHP-112	10	1-1/2		3,000	7 x 21	37.50	38501015E
VCHP-2	10	2		4,000	8 x 24	46.70	38501020E
VCHP-3	10	3		6,000	10 x 30	70.50	38501030E
VCHP-5	10	5		10,000	10 x 30	90.55	38501050E

VCHP-12	20	1/2		1,000	5 x 15	17.75	38502005E
VCHP-1	20	1		2,000	6 x 18	26.60	38502010E
VCHP-112	20	1-1/2		3,000	7 x 21	44.45	38502015E
VCHP-2	20	2		4,000	8 x 24	53.60	38502020E
VCHP-3	20	3		6,000	10 x 30	84.70	38502030E
VCHP-5	20	5		10,000	10 x 30	118.95	38502050E



Parts for "Gold" Series Chain Hoists

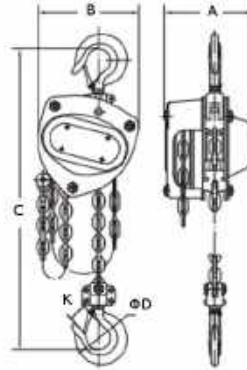
		1/2 Ton	1 Ton	1-1/2 Ton	2 Ton	3 Ton	5 Ton
Load Chain	Dimension (mm)	5 x 15	6 x 18	7 x 21	8 x 24	10 x 30	10 x 30
	Part Number	38580515	38580618	38580721	38580824	38581030	38581030
	Weight (lbs/ft)	0.24	0.37	0.52	0.71	1.46	1.46
Bottom Hook Assembly *		38506005E	38506010E	38506015E	38506020E	38506030E	38506050E
Latch Kit		38508005E	38508010E	38508015E	38508020E	38508030E	38508050E
Friction Discs (asbestos Free)		38507005E	38507010E	38507015E	38507020E	38507030E	38507050E

* Top & Bottom Hook assemblies come C/W Cast Latch.

7-1/2, 10, 20 and 25 ton are also available as a special order from our factory.

WARNING: NEVER EXCEED WORKING LOAD LIMITS!

Gold Series Chain Hoists



Model		VCH-12	VCH-1	VCH-112	VCH-2	VCH-3	VCH-5
Capacity	Tons	0.50	1.00	1.50	2.00	3.00	5.00
Proof Load	kN	3.75	7.50	15.00	22.50	30.00	75
Effort (max. lift)	N	240	250	265	335	372	360
# of falls, load chain		1	1	1	1	1	2
Load Chain	mm	5 x 15	6 x 18	7 x 21	8 x 24	10 x 30	10 x 30
Dimensions	A	132	151	173	175	205	205
	(mm)	B	148	172	196	210	255
	C	345	376	442	470	548	548
	D	35	40	45	50	55	55
	K	23	27	33	35	39	39

Special Features

- Compact design
- Optional Gear Ratio
- Sealed Bearings
- Automatic brake engagement holding load at any desired height.
- Double pawl for increased safety and easier adjustment.
- Extra thick heavy duty friction discs (free of asbestos) for increased service life and reliability
- Extra thick heavy duty gears.
- Rubber hand grip for greater operator and comfort.
- Forged top and bottom hooks c/w latches, that rotate 360 °.
- Hooks are designed to stretch when overloaded before chain failure.
- Proof tested at 1.5 times the WLL.**

Overload Protection
Alloy load chain
Articulating top hook

WARNING: NEVER EXCEED WORKING LOAD LIMITS!



Gold Series Lever Hoists

Gold Series Hoists, designed for the most demanding construction and mining application. The Choice of hoist for "PROFESSIONALS".
 Proof tested at 1.5 times the WLL.
 ASME B30.21



Lever Hoist							
Model #	Lift ft.	Rating Tons	Capacity (lbs)	Load Chain	Weight (lbs/pc)	Product Code	
VLHP 14	5	1/4	500	5 x 15	4.60	38550502E	
VLHP 12	5	1/2	1,000	6 x 18	11.70	38550505E	
VLHP-34	5	3/4	1,500	6 x 18	14.40	38550507E	
VLHP-112	5	1-1/2	3,000	7 x 21	22.50	38550515E	
VLHP-3	5	3	6,000	10 x 30	48.50	38550530E	
VLHP-6	5	6	12,000	10 x 30	74.90	38550560E	
VLHP 14	10	1/4	500	5 x 15	8.00	38551002E	
VLHP-12	10	1/2	1,000	5 x 15	13.50	38551005E	
VLHP-34	10	3/4	1,500	6 x 18	17.00	38551007E	
VLHP-112	10	1-1/2	3,000	7 x 21	26.00	38551015E	
VLHP-2	10	2	4,000	8 x 24	55.80	38551020E	
VLHP-3	10	3	6,000	10 x 30	84.70	38551030E	
VLHP-5	10	5	10,000	10 x 30	118.95	38551050E	



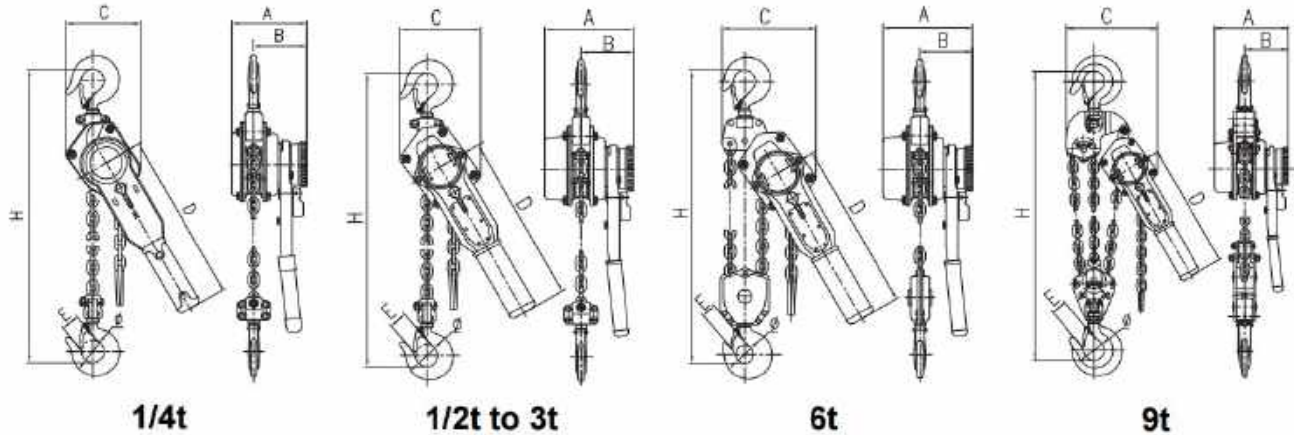
Parts for "Gold" Series Lever Hoists

		VLHP 14	VLHP 12	VLHP 34	VLHP 112	VLHP 3	VLHP 6
Load Chain	Dimension (mm)	4 x 12	5 x 15	6 x 18	7 x 21	10 x 30	10 x 30
	Part Number	38580412	38580515	38580618	38580724	38581030	38581030
	Weight (lbs/ft)	0.24	0.37	0.52	0.71	1.46	1.46
Bottom Hook Assembly *		38556002E	38556005E	38556007E	38556015E	38556030E	38556060E
Top Hook Assembly *		38555002E	38555005E	38555007E	38555015E	38555030E	38555060E
Latch Kit		385598002E	385598005E	385598007E	385598015E	385598030E	385598050E
Friction Discs (asbestos Free)			38557005E	38557007E	38557015E	38557030E	38557060E
Handle				38558007E	38558015E	38558030E	38558060E
Square Cast Ring		385593002E	385593002E	385593002E	385593015E	385593030E	385593030E

* Top and Bottom Hook Assemblies come complete with Cast Latches

WARNING: NEVER EXCEED WORKING LOAD LIMITS!

Gold Series Lever Hoists



Model		VLPH						
		14	12	34	112	3	6	9**
Capacity	Tons	0.25	0.50	0.75	1.50	3.00	6.00	9.00
Proof Load	kN	3.7	7.50	11.25	22.00	45.00	90	135.00
Effort (max. lift)	N	282	248	265	295	335	370	420
# of falls, load chain		1	1	1	1	1	2	3
Load Chain	mm	4 x 12	5 x 15	6 x 18	7 x 21	10 x 30	10 x 30	10 x 30
Dimensions (mm)	A	92	143	148	173	200	200	200
	B	71	86	87	99	112	112	112
	C	70	118	132	145	199	230	338
	D	31	31.5	35.5	42.5	50	53	67
	H	245	300	330	400	520	640	770
	L	168	253	278	378	388	388	489
	K	20	24	27	33.5	40	42.5	53

** 9T unit is not a standard stock item

Special Features	Compact design	Overload Protection
	Optimal Gear Ratio	Alloy load chain
	Sealed Bearings	Articulating top hook
	Automatic brake engagement holding load at any desired height	
	Double pawl for increased safety and easier adjustment	
	Extra thick heavy duty friction discs (free of asbestos) for increased service life and reliability	
	Extra thick heavy duty gears	
	Rubber hand grip for greater operator and comfort	
	Forged top and bottom hooks c/w latches, that rotate 360 °	
	Hooks are designed to stretch when overloaded before chain failure	
	Proof tested at 1.5 times the WLL	

WARNING: NEVER EXCEED WORKING LOAD LIMITS!

Type-1 Heavy Duty Lever Hoists

Type-1 Heavy Duty Lever Hoists are designed for the most demanding construction and mining application. Supplied with the "PROFESSIONALS" in mind.

Proof tested at 1.5 times the WLL.

ASME B30.21



Lever Hoist								
Model #	Lift ft.	Rating Tons		Capacity (lbs)		Load Chain	Weight (lbs/pc)	Product Code
VLH 14	5	1/4		500		5 x 15	4.60	38550502
VLH 12	5	1/2		1,000		6 x 18	11.70	38550505
VLH-34	5	3/4		1,500		6 x 18	14.40	38550507
VLH-112	5	1-1/2		3,000		7 x 21	22.50	38550515
VLH-3	5	3		6,000		10 x 30	48.50	38550530
VLH-6	5	6		12,000		10 x 30	74.90	38550560
VLH-14	10	1/4		500		5 x 15	8.00	38551002
VLH-12	10	1/2		1,000		5 x 15	13.50	38551005
VLH-34	10	3/4		1,500		6 x 18	17.00	38551007
VLH-112	10	1-1/2		3,000		7 x 21	26.00	38551015
VLH-2	10	2		4,000		8 x 24	55.80	38551020
VLH-3	10	3		6,000		10 x 30	84.70	38551030
VLH-5	10	5		10,000		10 x 30	118.95	38551050



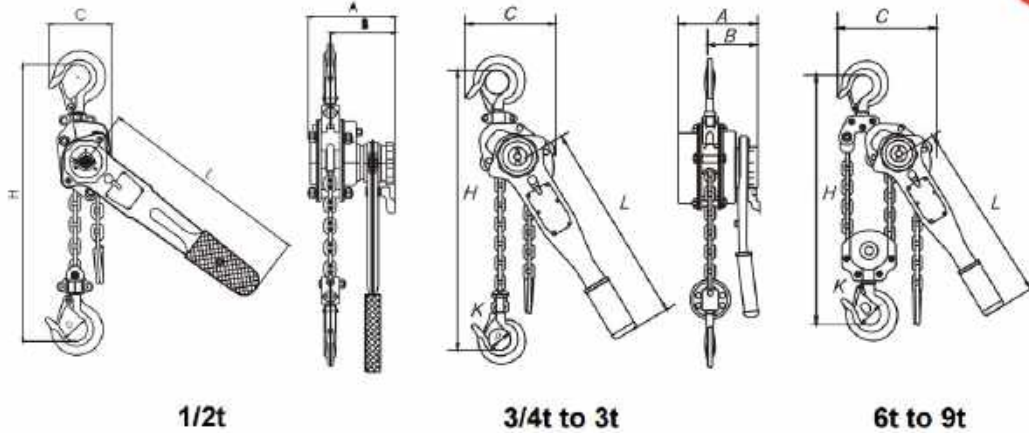
Parts for Type-1 Series Lever Hoists

		VLH 14	VLH 12	VLH 34	VLH 112	VLH 3	VLH 6
Load Chain	Dimension (mm)	4 x 12	5 x 15	6 x 18	8 x 21	10 x 30	10 x 30
	Part Number	38580412	38580515	38580618	38580824	38581030	38581030
	Weight (lbs/ft)	0.24	0.37	0.52	0.94	1.46	1.46
Bottom Hook Assembly *		38556002	38556005	38556007	38556015	38556030	38556060
Top Hook Assembly *		38555002	38555005	38555007	38555015	38555030	38555060
Latch Kit		38598002	38598005	38598007	38598015	38598030	38598050
Friction Discs (asbestos Free)			38597005	38597007	38597015	38597030	38597060
Handle			38558005	38558007	38558015	38558030	38558060
Square Cast Ring				385593007	385593015	385593030	385593030

* Top and Bottom Hook Assemblies come complete with Cast Latches

WARNING: NEVER EXCEED WORKING LOAD LIMITS!

Type-1 Heavy Duty Lever Hoists



Model		VLH					
		12	34	112	3	6	9 **
Capacity	Tons	0.50	0.75	1.50	3.00	6.00	9.00
Proof Load	kN	6.30	11.00	22.10	44.10	88.2	132.30
Effort (max. lift)	N	340	140	220	320	340	360
# of falls, load chain		1	1	1	1	2	3
Load Chain	mm	5 x 15	6 x 18	8 x 24	10 x 30	10 x 30	10 x 30
Dimensions (mm)	A	105	145	175	203	203	203
	B	75	86	100	118	118	118
	C	80	122	130	150	205	316
	D	35	40	45	55	65	85
	H	260	320	380	480	620	700
	L	300	280	410	410	410	410
	K	30	26	30	38	44	50

** 9T unit is not a standard stock item

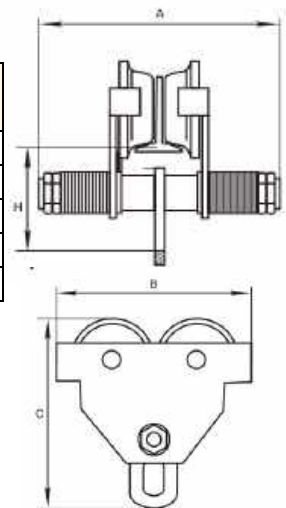
Special Features	<ul style="list-style-type: none"> Compact design Optimal Gear Ratio Sealed Bearings Automatic brake engagement holding load at any desired height Triple spur geared, guarantees efficient/reliable operation Extra thick heavy duty friction discs (free of asbestos) for increased service life and reliability Extra thick heavy duty gears Rubber hand grip for greater operator and comfort Forged top and bottom hooks c/w latches, that rotate 360 ° Top and bottom hooks are designed to stretch when overloaded before chain failure Proof tested at 1.5 times the WLL 	<ul style="list-style-type: none"> Alloy load chain Articulating top hook
------------------	---	---

WARNING: NEVER EXCEED WORKING LOAD LIMITS!

Push Trolleys



Push Trolley Model #	I-Beam Width		Dimensions				Capacity Tons	Weight (lbs/pc)	Product Code
	mm	inches	A	B	C	H			
VPT-F 12	58-220	1.96-8.66	11.22	7.800	6.22	2.54	1/2	11	38570005
VPT-F 1	58-220	1.96-8.66	11.22	9.370	7.20	2.60	1	19	38570010
VPT-F 2	66-220	2.60-8.66	11.81	10.900	8.19	2.95	2	31	38570020
VPT-F 3	74-220	2.91-8.66	12.64	12.750	9.80	3.35	3	52	38570030
VPT-F 5	90-220	3.54-8.66	13.64	14.685	11.67	3.94	5	88	38570050



NEVER EXCEED WORKING LOAD LIMITS.

During use, the accidental impacts or snagging of the loads being handled with surrounding objects may overload the units.

ALWAYS REMAIN AWARE OF YOUR SURROUNDINGS.

NEVER modify the equipment.

NEVER side pull the loads, and always ensure to center the equipment above the load before lifting it.

DO NOT constantly use the end plates as a means of stopping.

DO NOT USE these push trolleys:

- * Unless the beam has been tested and approved for attaching lifting devices.
- * Unless the size range of the push trolley corresponds with the size of the beam.
- * Without making sure that the beam capacity exceeds the load rating of the push trolley.
- * Without making sure that the push trolley is fully tightened and correctly engaged to the beam.

INSTALLATION:

Ensure that all safety regulations are complied with during installation (use of safety harnesses, evacuation of the areas, warning signs. . .etc.)

Measure the actual width of the beam.

When required, assemble the correct number of spacer washers equally on both sides, to the inside of the trolley side plates. Make sure that the swivel hanger pin trolley wheels are 6 mm greater than the runway beam width.

SLOWLY run the unit along the full length of the structure/runway beam. To ensure safe factory operations, make all necessary adjustments **BEFORE** applying any load.

WARNING: FAILURE TO OBSERVE THESE WARNINGS MAY RESULT IN SERIOUS INJURY OR DEATH !



General Warnings

All Vanguard rigging products are sold with the express understanding that both the purchaser and the end user are thoroughly familiar with the safe, proper and acceptable applications of the products.

It is the responsibility of the end user to establish proper safety programs and to provide thorough training for all personnel prior to use. The training programs must meet any federal/provincial/state/local code requirements, existing plant/site safety rules and regulations, and all instructions provided in the applicable section of this catalogue.

Product failure can occur due to abuse, misapplication, lack of maintenance, use by unqualified personnel and improper inspection prior to use. **Any failure of rigging products may result in property damage, personal injury and even death!!!!**

Standards

There are numerous government and industrial standards that cover rigging products. This catalogue makes no attempt to reference all of them; it references to the standards that are most frequently asked about.

Working Load Limit (WLL) – Safe Working Load (SWL)

The Working Load Limits shown in this catalogue are applicable to products that are new or “in as new” condition. The Working Load Limits ratings refer to the maximum amount of force or load that the rigging product can carry under normal working/environmental conditions. The Working Load Limits and Design Factor can be affected by wear, misuse, overloading, shock loading, side loading, corrosion, deformation, product alteration and other use conditions. Inspection of rigging products prior to use is required to determine whether the product continues to meet the assigned WLL provided in this catalogue, should be used at a reduced rating or removed from service.

The WLL rating must never be exceeded!!!!



General information disclaimer

The contents contained in this publication are for general information only.

Although every effort has been made to assure the accuracy of the information at time of print, persons who use the Catalog should note that ratings, laws, rules, and policies change from time to time and that these changes may alter the information contained in this publication.

Vanguard Steel Ltd. assumes no liability for Catalog errors or omissions.

It is the responsibility of each person who uses this Catalog to ascertain current information that pertains to the individual lifting program, particularly with regard to satisfactory safety compliance requirements. Check your Provincial and Local safety standards before any operation or lift is attempted.

It is the responsibility of the person/operator to frequently search for updated reference information.

Do not use lesser than matching Grade components for any lifting application !

Do not use Slings, Chains or Accessories with signs of wear or deformation !

Inspections - Each day before being used, the sling and all fastenings and attachments shall be inspected for damage or defects by a competent person designated by the employer. Additional inspections shall be performed during sling use where service conditions warrant. Damaged or defective slings shall be immediately removed from service.

Five Locations to Serve You

Toronto

Head Office

2160 Meadowpine Blvd.

Mississauga, Ontario

L5N 6H6

Phone (905) 821-1100

Fax (905) 821-2024



Montreal

2205 de l'Aviation

Dorval, Quebec

H9P 2X6

Phone (514) 685-1515

Fax (514) 685-1516



Winnipeg

190 Omands Creek Blvd.

Winnipeg, Manitoba

R2R 1V7

Phone (204) 694-2259

Fax (204) 633-7230



Edmonton

7606 McIntyre Road, N.W.

Edmonton, Alberta

T6E 6Z1

Phone (780) 466-1115

Fax (780) 469-4545



Vancouver

7880 Fraser Park Drive

Burnaby, BC

V5J 5L8

Phone (604) 294-3191

Fax (604) 294-8845

