



MATERIAL HANDLING

LEVER OPERATED LEVER HOIST RED BEAST

.8 Ton Through 3 Ton



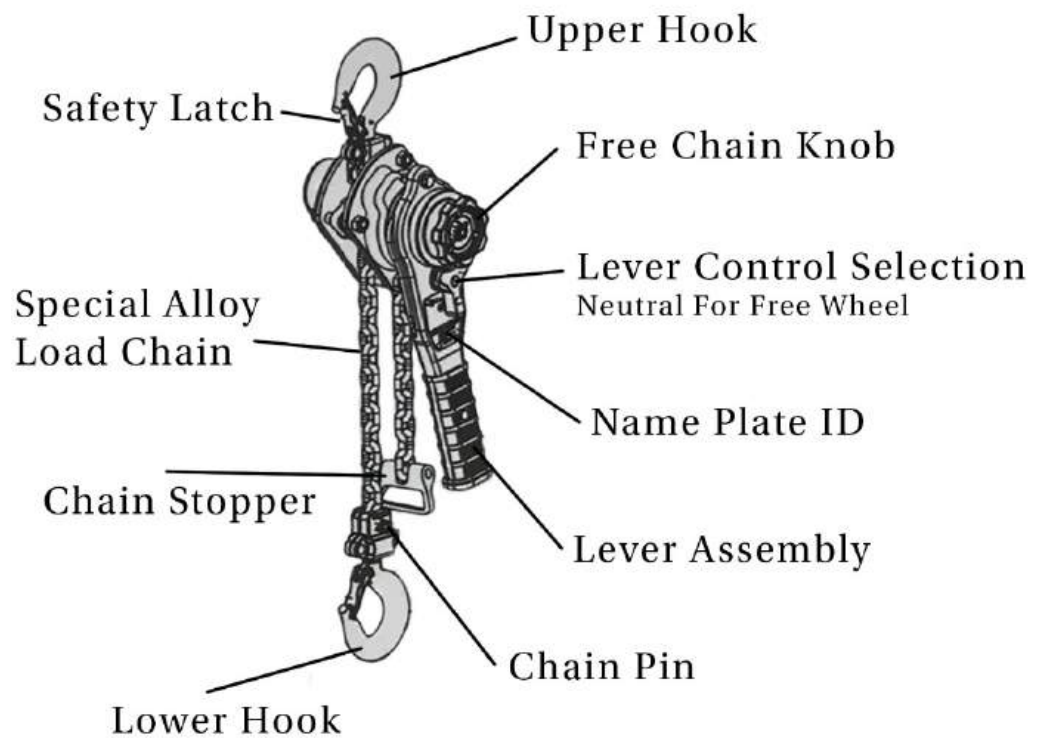
OWNER'S MANUAL

WARNING

For your safety: The operation and maintenance of this equipment requires a thorough understanding of the information contained within this manual. Prior to any installation, operation, or maintenance activities, all personnel must carefully review and comprehend the entirety of this manual. Failure to adhere to the instructions and guidelines presented herein may result in severe personal injury, death, or property damage.

HOIST FEATURES:

- No Pre-Load Required
- Robust Design
- Minimum Effort to Lift Rated Capacity
- All Bearing Construction
- Bonded Brakes Discs
- Cast Steel Safety Latches
- Powder Coated Paint Finish
- Stainless Steel Name Plate
- Weather Protected Automatic Weston Brake
- Grade 100 Alloy Load Chain





LIMITED ONE YEAR WARRANTY

Red Beast manual hoists are guaranteed to be free of defect in both material and workmanship. If one of our hoists fails during the first year of operation due to defect in either material or workmanship we will repair or replace the unit (at our discretion) after physical inspection by our repair department. This warranty does not cover normal wear and tear of the units, and it does not apply to units that show signs of misuse, overloading, alteration or improper/lack of maintenance.

No unit can be returned for inspection without first receiving authorization from our customer service department. The unit(s) for which there is a warranty claim must be returned to the location that has authorized the units return prepaid complete with proof of purchase.

For our branch locations please refer to the back page.

Inspection and Maintenance of Manual

INSPECTION GUIDE FOR MANUAL LEVER HOIST

To ensure the safe and efficient operation of your Red Beast Manual Lever Hoist, follow these key inspection steps:

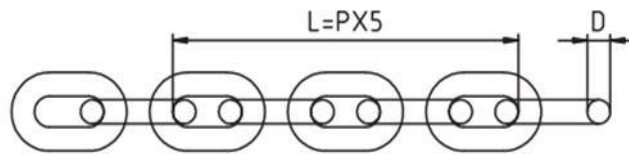
- **Pre-Use and Daily Checks:** Visually inspect the hoist for damage or wear before each use. Check the hooks, lever, and body for cracks, deformations, or corrosion. Test the hoist without a load to ensure smooth lever movement and proper brake function.
- **Load Chain and Hooks:** Inspect the load chain for stretching, kinking, or excessive wear. Ensure the chain is well-lubricated. Check hooks for deformation or cracks and verify that safety latches are functioning correctly.
- **Brake and Internal Components:** Test the brake mechanism with a light load to ensure it holds securely. Inspect the brake pads and internal components for wear. Ensure all fasteners are tight, and safety labels and load capacity markings are legible.

The hoist operator, inspector, and maintenance personnel training program should be based on the requirements in accordance with the latest edition of ASME B30.21 and your local safety standards, such as WorkSafe and OSHA.



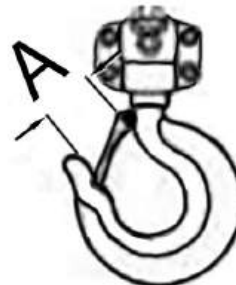
LOAD CHAIN INSPECTION

Load chain can become excessively worn, elongated and/or damaged beyond safe working condition. A visual inspection of the load chain should be performed **BEFORE** each use of the hoist. The full length of load chain must be replaced immediately if even one link is excessively worn, elongated or damaged



Chain Diameter	Capacity	Load Chain Diameter(D)		Load Chain 5 links(L)	
		Standard	Minimum	Standard	Maximum
5.6*15.7	0.8-1T	5.6	5.04	78.5	80.855
7.1*19.9	1.6T	7.1	6.39	99.5	102.485
10*28	3.2T	10	9	140	144.2
	6.3T				
	9T				

Capacity	Standard A	Maxmum A
0.8-1t	28	30.8
1.6t	30	33
3.2t	36	39.6
6.3t	45	49.5
9t	51	56.1

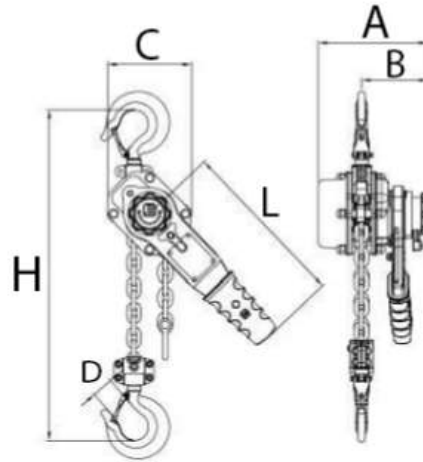


When measuring hook openings the use of vernier calipers is required. Any load chain that exceeds the maximum load chain dimensions shown above must be immediately replaced with new load chain

BEFORE being used/returned to service.



SPECIFICATION SHEET



0.8 - 3.2 T

VGD RED BEAST Specifications Sheet															
Model	W.L.L (t)	LIFT (m)	Proof Load (t)	Lever Force kg(n)(lbs)	Load Chain		Dimensions (mm)						N.W. (kg)	Additional Weight Per Lift (kg)	
					Falls	Size	H	A	B	C	D	L	kg		
VLHK-0.8	0.8	1.5	1.2	22(215)(48)	1	5.6x15.7	300	150	100	119	24	245	6.3	0.7	
VLHK - 1	1	1.5	1.5	30(294)(66)	1	5.6x15.7	300	150	100	119	24	245	6.3	0.7	
VLHK -1.6	1.6	1.5	2.4	31(304)(68)	1	7.1x19.9	350	168	104	126	32	265	8.5	1.1	
VLHK -3.2	3.2	1.5	4.8	38(372)(84)	1	10x28	395	201	118	159	35	415	14.2	2.3	



OPERATION INSTRUCTIONS

- **Pre-Use Check:** Ensure the hoist and load chain are free of damage and properly lubricated. Verify that the hooks and safety latches are in good condition and the hoist is correctly mounted.
- **Safe Lifting:** Position the load under the hoist and attach securely. Operate the lever to lift and lower the load smoothly, ensuring the load remains balanced and does not exceed the hoist's capacity.
- **Brake Test:** Raise the load slightly and stop to ensure the brake holds the load securely before proceeding with the operation.
- **Post-Use Maintenance:** After use, clean the hoist, inspect for any signs of wear or damage, and store it in a dry, safe place to prevent rust and corrosion.

The hoist operator, inspector, and maintenance personnel training program should be based on the requirements in accordance with the latest edition of ASME B30.21 and your local safety standards, such as WorkSafe and OSHA.

Hoist Safety Points:

Before Use:

- **ALWAYS** read warning tags and manual thoroughly.
- **NEVER** exceed the hoist's rated capacity.
- **NEVER** use hoists as slings.
- **Inspect the load chain:** Don't use a hoist if the chain is twisted, kinked, damaged, stretched, or capsized.
- **Center the load:** Ensure the load is centered under the hoist before operating.
- **Manual power only:** Never operate hoists with any power source other than manual.

Operation:

- **NEVER** lift or transport loads over or near people.
- **NEVER** use a hoist for lifting, supporting, or transporting people.
- **NEVER** operate a damaged or malfunctioning hoist.
- **ALWAYS** avoid shock loading.
- **ALWAYS** clear the work area of people and obstructions.

- **Neutral (N):** Allows free wheeling for hook positioning (when not under load).
- **Up:** Slowly ratchet the load upwards while observing for obstructions.
- **Down:** Slowly ratchet the load downwards, expecting additional effort to overcome brake friction.

Cont. next page



Load Handling:

- **Capacity:** Ensure the hoist meets or exceeds the capacity requirements for the material being lifted.
- **Top Hook:** Ensure the top hook is properly attached with a fully engaged latch kit to an anchorage point rated for the load weight.
- **Bottom Hook:** Ensure the bottom hook is properly attached with a fully engaged latch kit to the material or clamp being lifted.

Maintenance:

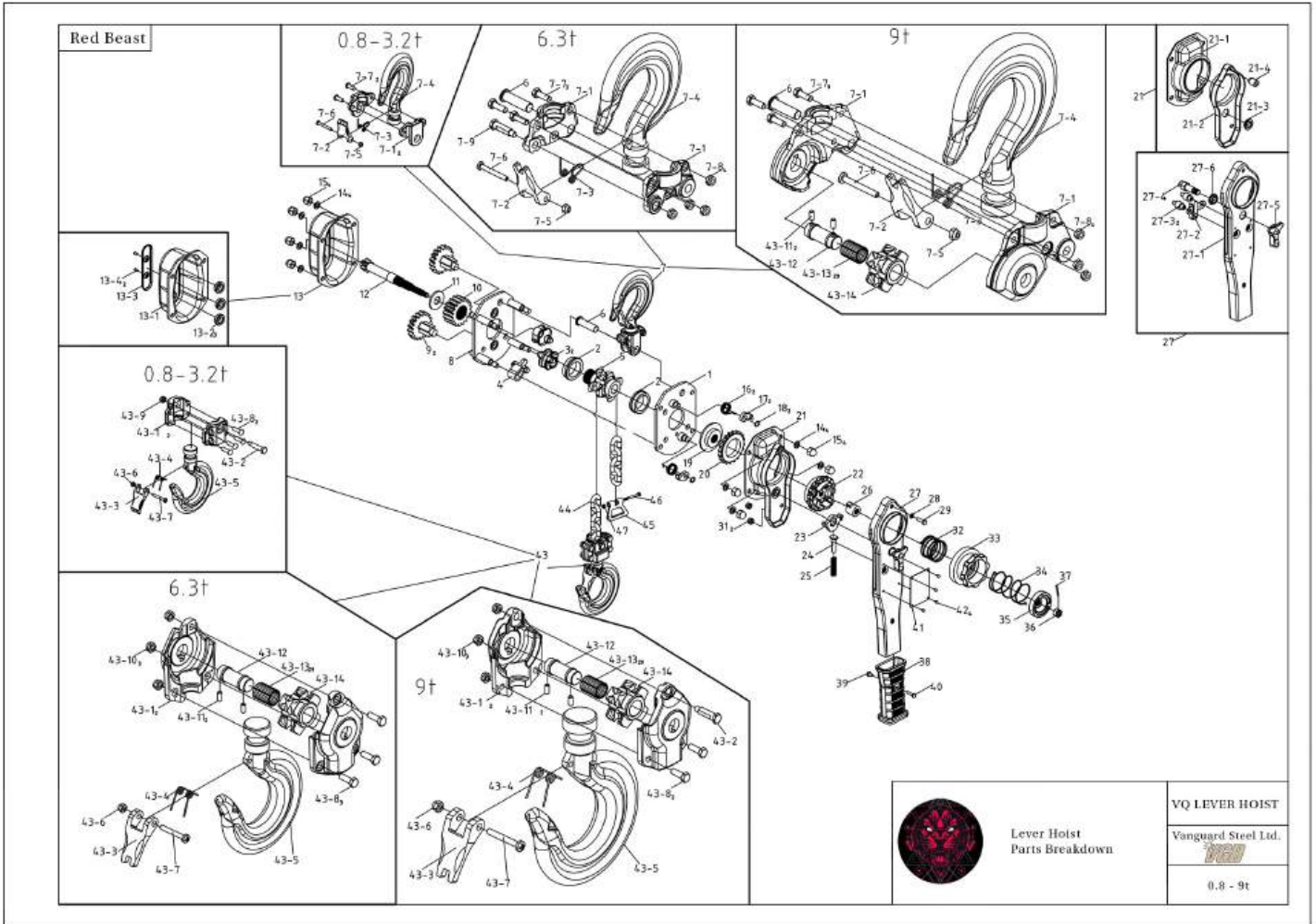
- **Lubrication:** Regularly ensure the hoist is properly lubricated to prevent failure and potential injury, death, or property damage.

Control Function:

- The control function/directional latch has three settings: Up, Neutral, and Down.



Blowout Parts Diagram





Part's List

Part No.	Description	Quantity	Part No.	Description	Quantity	Part No.	Description	Quantity		
	24	Spring shaft	1		48	Overload clutch	1	48-8	Brake seat of overload protection	1
	23	Change over pawl	1		47	Hex nut of end anchor	1	48-7	Ratchet gear of overload protection	1
	22	Change over gear	1		46	Pin of end anchor	1	48-6	Roll pin of overload protection	3
21	21-4	Bolt	1		45	End anchor	1	48-5	Clamp of overload protection	1
	21-3	Washer of lever handle	1		44	load chain	1	48-4	Spring of overload protection	1
	21-2	Inner cover	1		43-14	Axle	1	48-3	Flat washer of overload protection	1
	21-1	Brake cover	1		43-13	Needle of axle	29	48-2	Brake seat ring of overload protection	1
	20-1	Ratchet disc	1		43-12	Shaft of axle	1	48-1	Locking nut of overload protection	1
20	20-2	Brake disc	2							
	19	Brake seat	1	43	43-11	Guide pin	2	Overload clutch		
	18	Snap ring	2		43-10	Hex nut of bottom hook's housing	4			
	17	Pawl	2		43-9	Hex nut of bottom hook's housing	1			
	16	Spring of pawl	2		43-8	Screw of bottom hook's housing	4			
	15	Hex nut of cover	8		43-7	Pin of safety latch of bottom hook	1			
	14	Washer of screw bolt	8		43-6	Hex Nut of safety latch of bottom hook	1			
13	13-4	Pin of cover	2		43-5	Bottom hook	1			
	13-3	Cover	1		43-4	Spring of safety latch of bottom hook	1			
	13-2	Steel ring	3		43-3	Safety latch of bottom hook	1			
	13-1	Gear cover	1		43-2	Suspension pin of bottom hook's housing	1			
	12	Pinion shaft	1	43-1	Bottom hook's housing	2				
	11	Snap ring	1		42	Screw drive	4			
	10	Splined gear	1		41	Nameplate	1			
9	9-2	Gear 2nd	1		40	Screw of hand grip	1			
	9-1	Gear 1st	2		39	Lock nut	1			
8	8-3	Steel ring	2		38	Hand grip	1			
	8-2	Support pin	4		37	Slotted nut	1			
	8-1	Right side plate	1		36	Hex nut of hand wheel	1			
7	7-9	Suspension pin of top hook's housing	1		35	Hand wheel cover	1			
	7-8	Hex nut of top hook's housing	2		34	Spring outer brake	1			
	7-7	Screw of top hook's housing	2		33	Hand wheel	1			
	7-6	Pin of safety latch of top hook	1		32	Spring inner brake	1			
	7-5	Hex nut of safety latch of top hook	1		31	Hex nut of inner cover	2			
	7-4	Top hook	1		30	/				
	7-3	Spring of safety latch of top hook	1		29	Screw bolt	1			
	7-2	Safety latch of top hook	1		28	Washer of screw bolt	1			
	7-1	Top hook's housing	2		27-6	Washer of lever handle	1			
	6	Top hook shaft	1		27-5	Selector	1			
	5	Chain sprocket	1		27-4	Pin of selector	1			
	4	Load chain cover	1		27-3	Bolt	2			
	3	Guide wheel	2		27-2	Spring seat	1			
	2	Roller bearing	2		27-1	Lever handle	1			
1	1-2	Pin of pawl	2		26	Brake cam	1			
	1-1	Left side plate	1		25	Spring of shaft	1			

Notes:

For more information visit us at
www.vanguardsteelvancouver.com

or

contact one of our customer service representative in
your area.

5 BRANCHES TO SERVE YOU ACROSS CANADA



TORONTO (HO)

Head Office
2160 Meadowpine Blvd.
Mississauga, Ontario
L5N 6H6
Phone (905) 821-1100
Fax (905) 821-2024



MONTREAL

2205 de l'Aviation
Dorval, Quebec H9P 2X6
Phone (514) 685-1515
Fax (514) 685-1516



WINNIPEG

190 Omands Creek Blvd.
Winnipeg, Manitoba R2R
1V7
Phone (204) 694-2259
Fax (204) 633-7230



EDMONTON

7606 McIntyre Road, N.W.
Edmonton, Alberta T6E
6Z1
Phone (780) 466-1115
Fax (780) 469-4545



VANCOUVER

7880 Fraser Park Drive
Burnaby, B.C. V5J 5L8
Tel: (604)-294-3191
Toll Free: 1-866-294-3191
Fax: (604)-294-8845

